

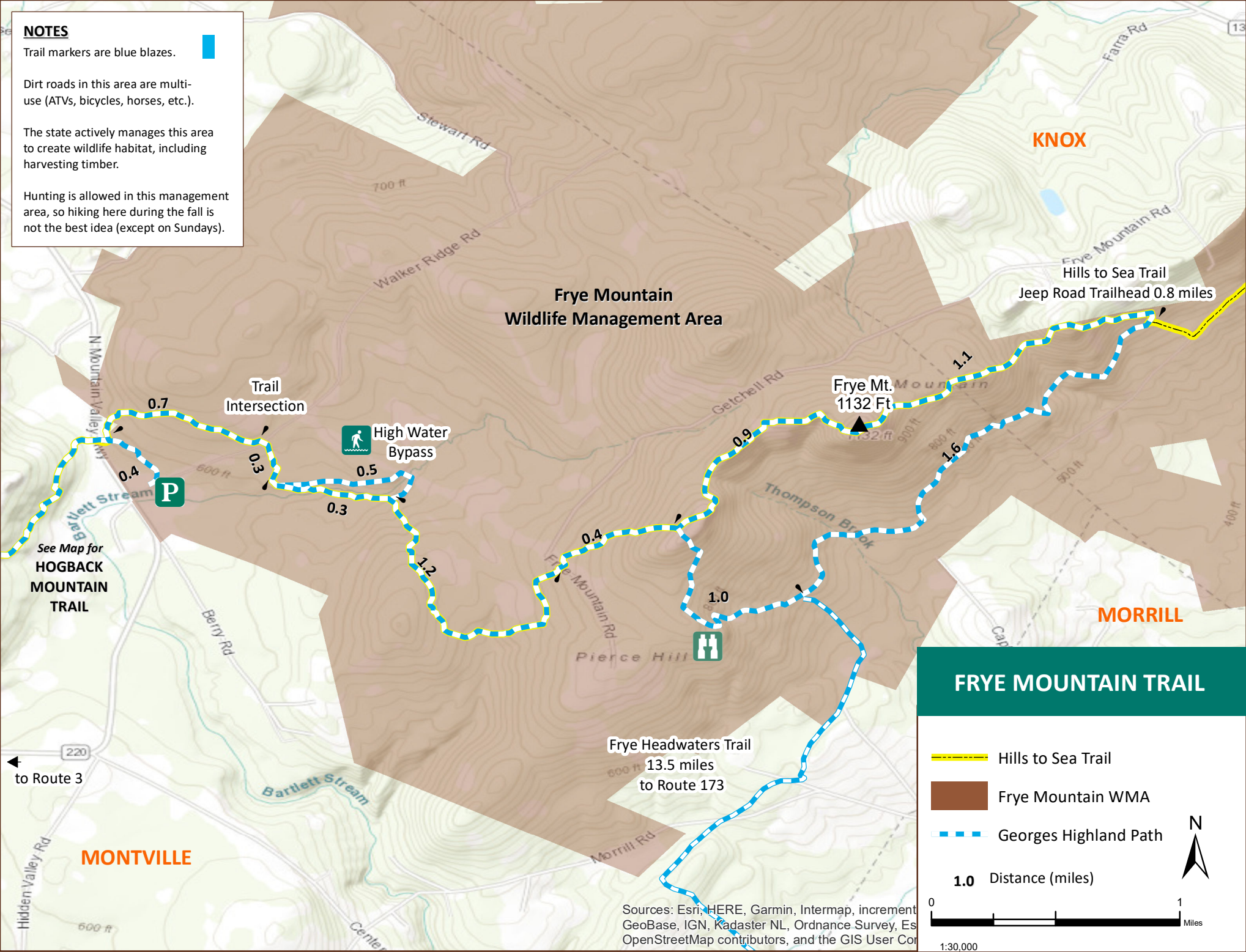
NOTES

Trail markers are blue blazes.

Dirt roads in this area are multi-use (ATVs, bicycles, horses, etc.).

The state actively manages this area to create wildlife habitat, including harvesting timber.

Hunting is allowed in this management area, so hiking here during the fall is not the best idea (except on Sundays).



Frye Mountain Wildlife Management Area

Frye Mt.
1132 Ft

Hills to Sea Trail
Jeep Road Trailhead 0.8 miles

Trail
Intersection

High Water
Bypass

See Map for
HOGBACK
MOUNTAIN
TRAIL

Frye Headwaters Trail
13.5 miles
to Route 173

FRYE MOUNTAIN TRAIL

- Hills to Sea Trail
- Frye Mountain WMA
- Georges Highland Path

1.0 Distance (miles)



Sources: Esri, HERE, Garmin, Intermap, increment GeoBase, IGN, Kadaster NL, Ordnance Survey, Esri OpenStreetMap contributors, and the GIS User Community

1:30,000